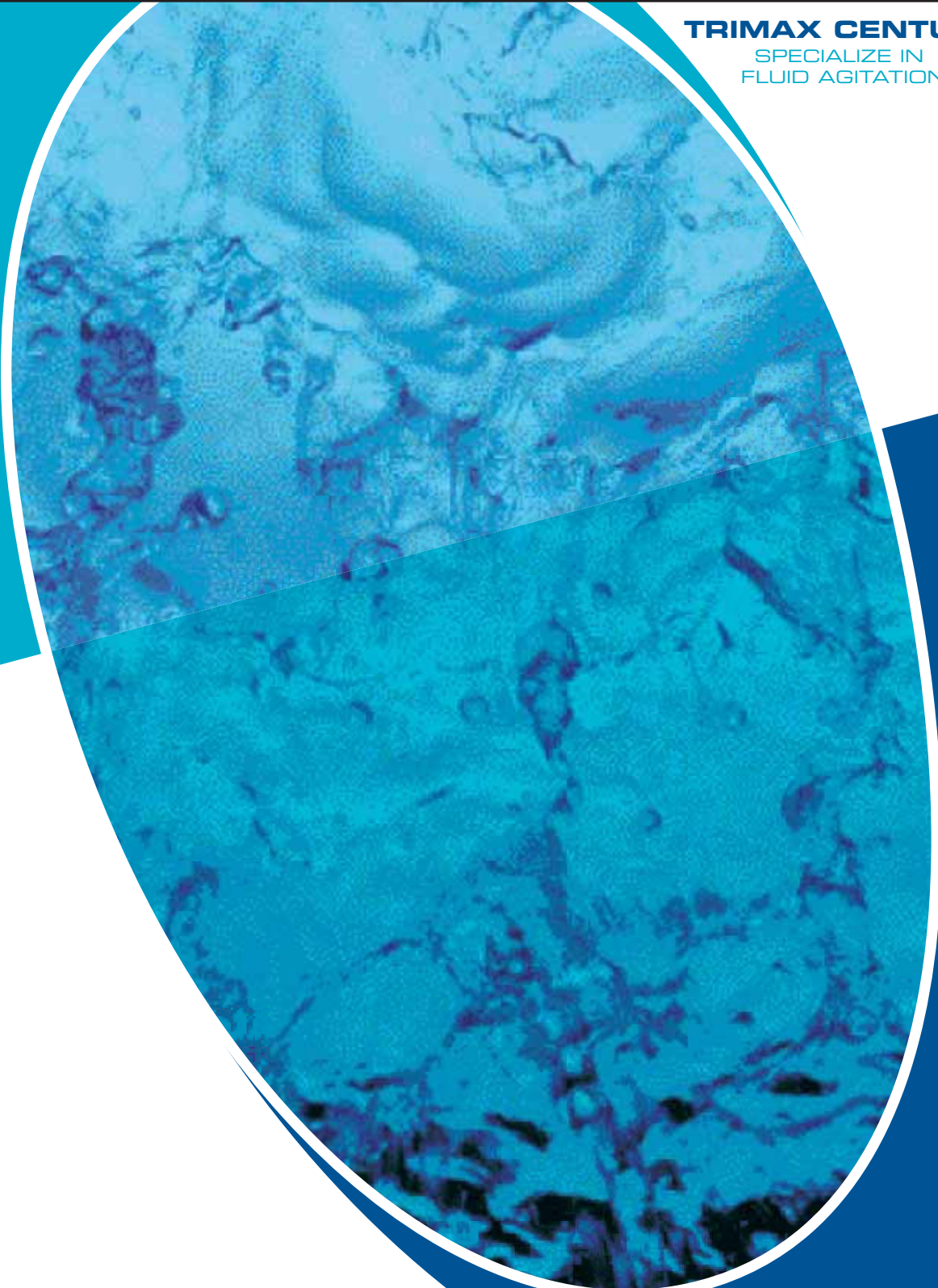
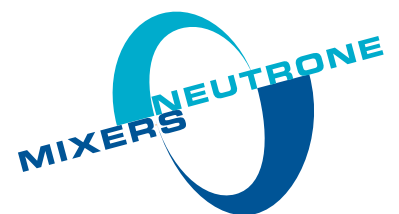


**TRIMAX CENTURY**  
SPECIALIZE IN  
FLUID AGITATION



## **NEUTRONE NP SERIES MIXER**

A Versatile Mixer Range  
for Quality Mixing Solutions



## NP Series MIXER RANGE

The NP top entry mixer series has been specifically developed for use throughout the process industries and features a high torque, double or triple reduction helical gear system. It is capable of operating on a wide range of applications including high viscosity blending and process reactors. Easy to install and with low maintenance costs, the NP range provides excellent value and performance for top entry mixing applications. Splash lubrication of gearing keeps NP Series agitators running smoothly while optional semi dry-well seal construction prevents contamination of the process fluid

### FEATURES

- Open with flat plate mounting and closed tank models with choice of DIN or ANSI mounting
- Comprehensive choice of shaft sealing options, including mechanical seals, stuffing boxes and lip seals.
- Power rating 0.25 to 30kW can either be fitted with normal TEFC or explosion proof motor, depending on the classification of environment
- Large diameter output bearings provide long bearing life and accommodate the high overhung loads experienced in mixing applications
- Solid impeller shaft for strength and ease of handling
- Low maintenance
- Proven field performance and reliability

### EXCELLENT VERSATILITY

- Wide choice of motors. All metric frame motors in the power range can be fitted, including multiple speed options.
- Wide range of output speeds provides a variety of torque options to meet all mixing requirements

### LOWER MAINTENANCE COSTS

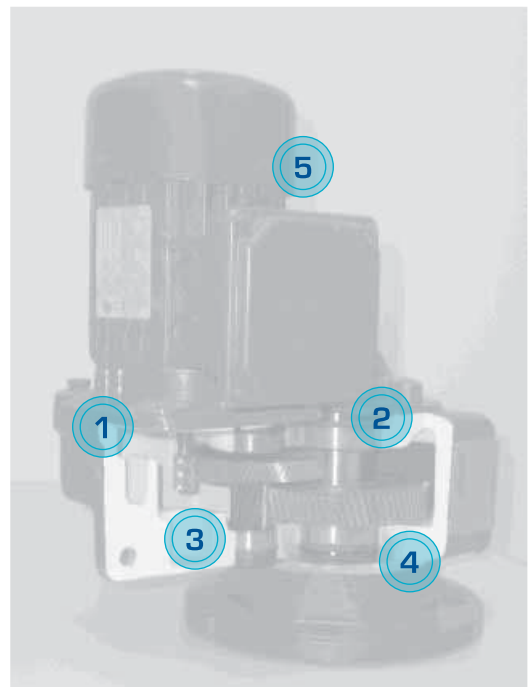
- Modular construction simplifies maintenance, reduces spare parts inventory and servicing costs.
- Fast maintenance. Oil needs changing only once a year. Oil can be checked, added to or changed without removing the high strength safety guard.
- High efficiency helical gearing uses energy more efficiently. Power loss through the drive train is minimized so that virtually all the energy is transferred into the mixing vessel.

### MATERIALS OF CONSTRUCTION

Carbon steel and SS316/304 are the NP Series standard for in-tank parts. Alloy and composite shafts are also available. Coverings such as rubber and special surface finishes can also be supplied.

#### REDUCER

1. Cast Iron Housing – Long, trouble-free operation
2. Minimum L-10 Bearing Life  
(Option of Reinforced Bearing for Longer shaft available)
3. Drives are supplied with lubricants  
(Option of FDA approved food grade grease available)
4. Optional Semi-Dry Well Seal prevent process fluid contamination
5. Integral motors as standard, IEC or NEMA motors available with IEC Adaptors



## SEALING & MOUNTING OPTIONS

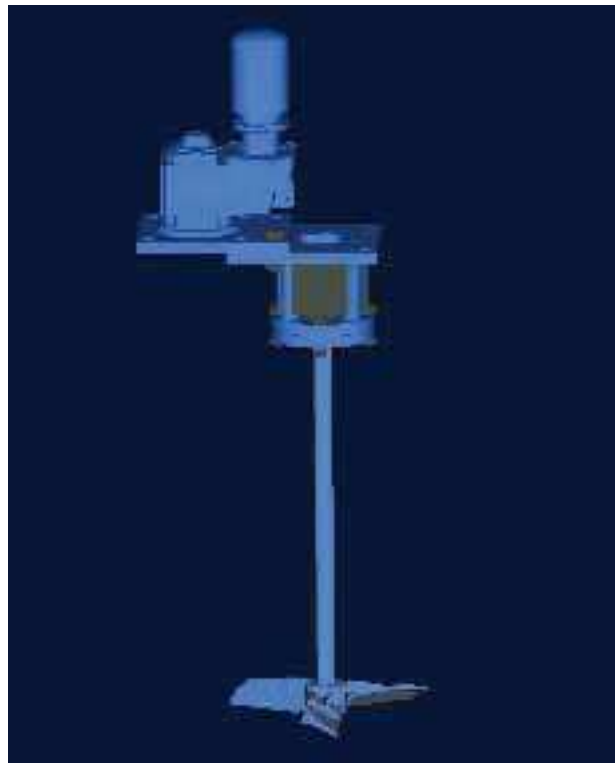
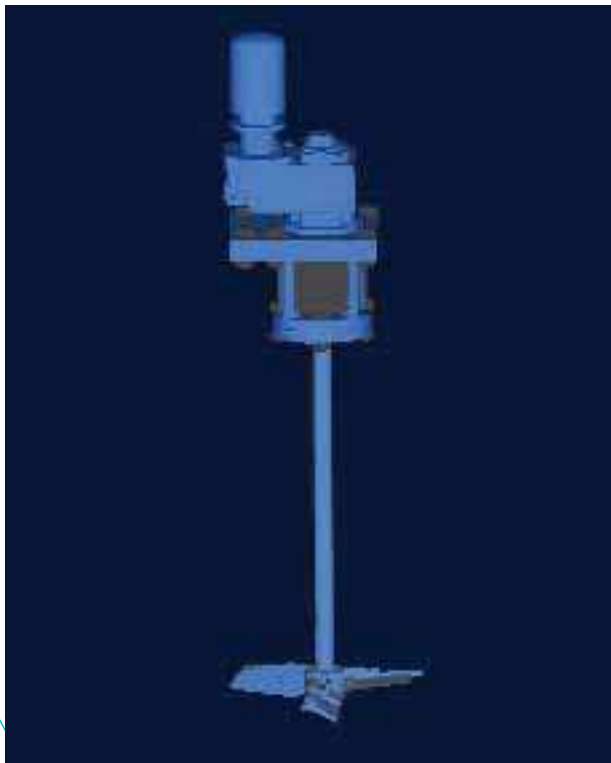
The NP Series offers a comprehensive range of tank sealing options. From simple lips seals to double mechanical seals, there is a selection to suit all process conditions.

The Neutrone NP Series model options are:-

- D/DS** = Closed tank mixer with mechanical seal
- HB** = Closed tank mixer with stuffing box
- E** = Closed or open tank mixer with lip seal
- A** = Open tank mixer

## D/DS UNITS

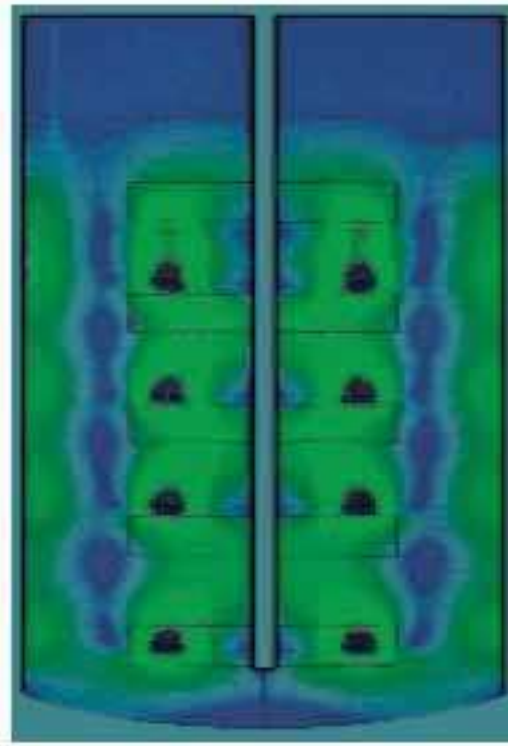
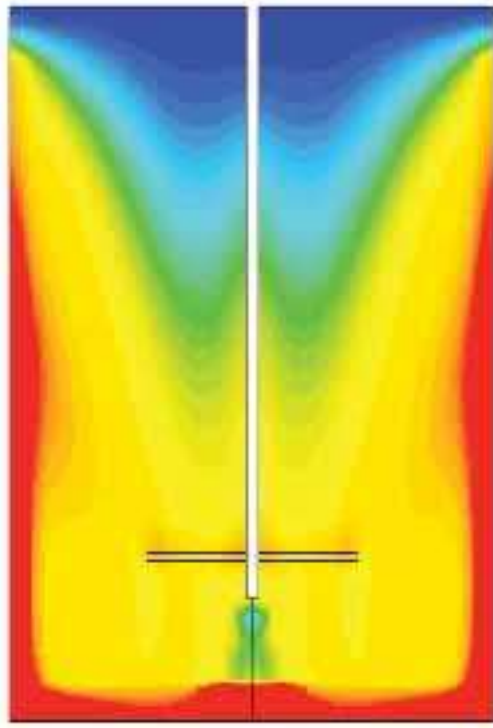
The NP Series "D/DS" use a wide variety of seals, including dry running and lubricated single and double seal options, the NP Series mixers will be supplied with a pedestal and mounting flange depending on the operating environment. Additional feature will be Neutrone's unique "SWING OUT" design making the usually troublesome mechanical seal maintenance hassle-free.



The unique "SWING OUT" design allows the removal of mechanical seal for maintenance without removal of the gear reducer.

Neutrone has designed and manufactured agitators exclusively for the requirements of fluid mixing. Neutrone are the acknowledged world leaders in fluid mixing technology

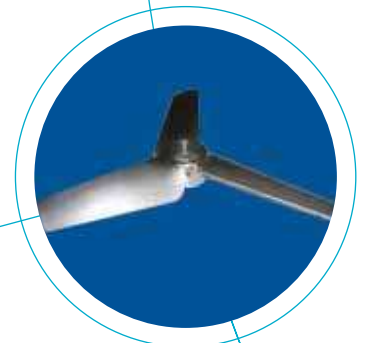
Utilizing advanced in-house mixing stimulation computer software, Neutrone is devoted exclusively to the manufacture of quality equipment for quality equipment for fluid agitation and mixing. One of the techniques that are frequently used to visualize the projections of fluid motion in an agitated tank. This program is used to depict the mixing conditions with Neutrone proposed mixer, and in turn generates a series of mathematical models to verify the process solution.



The unique "SWING OUT" design allows the removal of mechanical seal for maintenance without removal of the gear reducer.

## Impellers

A wide spectrum of impellers can be utilized on the NP series, depending on the process requirements. The standard impeller fitted on the NP mixers will be the high efficiency axial flow impeller – NE-3.



HIGH EFFICEINCY  
IMPELLER –NE-3

 Your Distributor